

RAVENHILL STUDIO

2122 Cypress Ave, Los Angeles, CA 90065
323.977.8532, contact@ravenhillstudio.com

We recommend that a professional electrician install our Peek Sconce Switch Fixture. Please share this guide with them and ensure they read the instructions completely before beginning assembly.

Your Peek Sconce Switch Fixture comes packaged in (3) individual parts and packets:

(1) Peek Sconce Switch Fixture

(1) Misc Contents Envelope

(1) G16.5 Lightbulb

Wire Nuts (2)

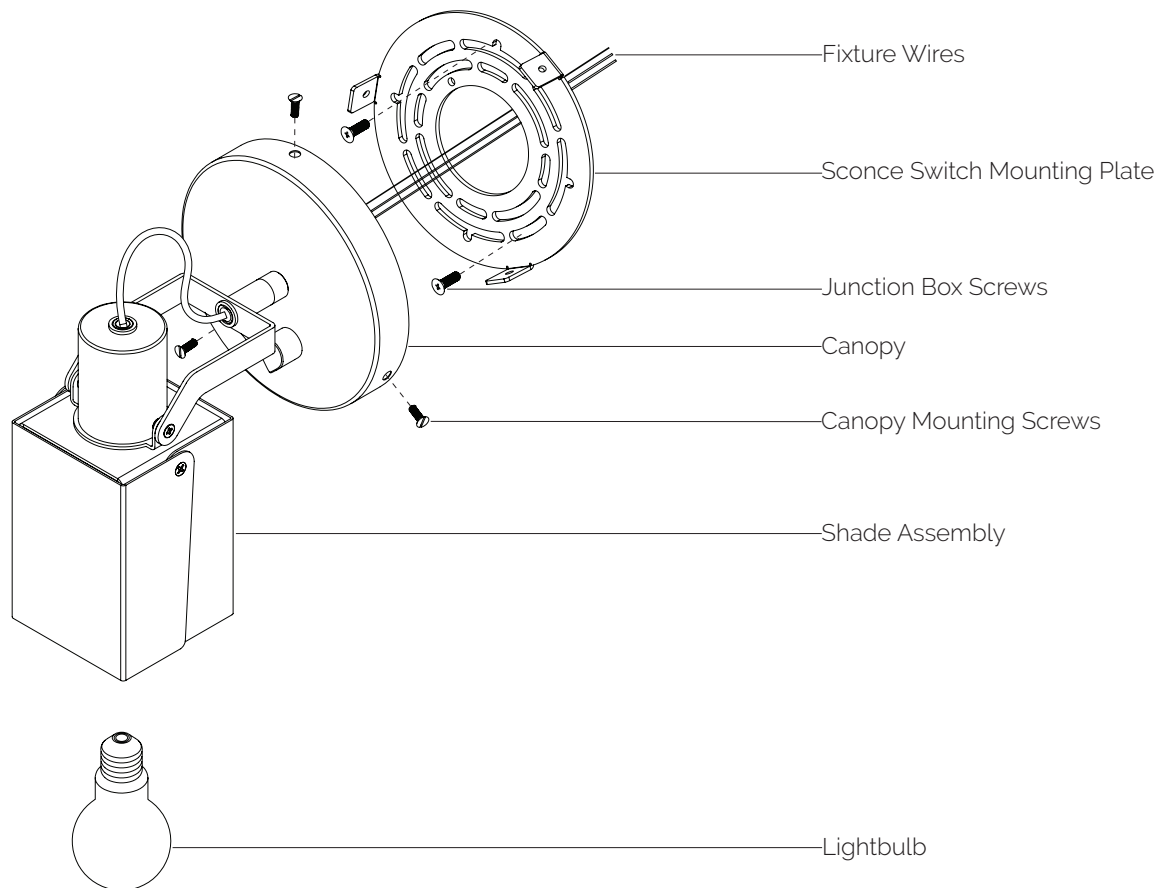
Canopy Mounting Screws (3)

Included with your Peek Sconce Switch Fixture is one G16.5 LED Lightbulb.

The Lightbulb is JA8 certified and has a 15,000-hour lifetime.

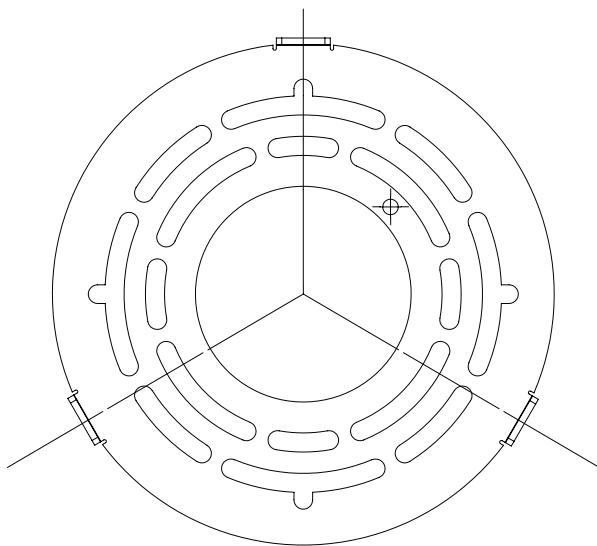
60W Max

Your Peek Sconce Switch Fixture is vulnerable to scratching and staining if care is not taken. Before installing or adjusting your fixture, it is highly recommended that you wear gloves.



CAUTION: Before starting, turn off power at main circuit power.

1. Unpack your box and open the miscellaneous contents envelope.
2. Unscrew the Sconce Switch Mounting Plate from the Canopy and set the Mounting Screws aside.
3. Bring the Sconce Switch Mounting Plate to the Junction Box. Orient the plate so that one tab is positioned at the top, with the other two tabs pointing downward at equal angles, 120 degrees apart.



4. Once oriented, use Junction Box Screws (not provided) to secure the Mounting Plate to the Junction Box.
5. Bring the Canopy to the wall and connect the Fixture Wires to the junction box power using Wire Nuts.
6. Align the holes on the Canopy with the threaded holes on the Mounting Plate, and use the Canopy Mounting Screws to secure the Fixture to the Plate. Screw in the Lightbulb, turn on and enjoy!

NOTES / TROUBLESHOOTING

Use a microfiber cloth to clean dust and dirt particles from your Peek Fixture.

Rotate the Shade Assembly clockwise or counterclockwise to achieve the desired orientation. Shades can be opened or closed to control light output.

The Swivel allows for up to 350 degrees of rotation and the Clevis provides 180 degrees of vertical adjustment.

It is highly recommended to clean your hands (and consider wearing gloves) before installing or adjusting your Peek fixture.

Use Renaissance Wax to remove tarnish on Waxed Brass and Nickel colorways only.

A Phillips Head Screwdriver can be used to tighten the shades and clevis needed.