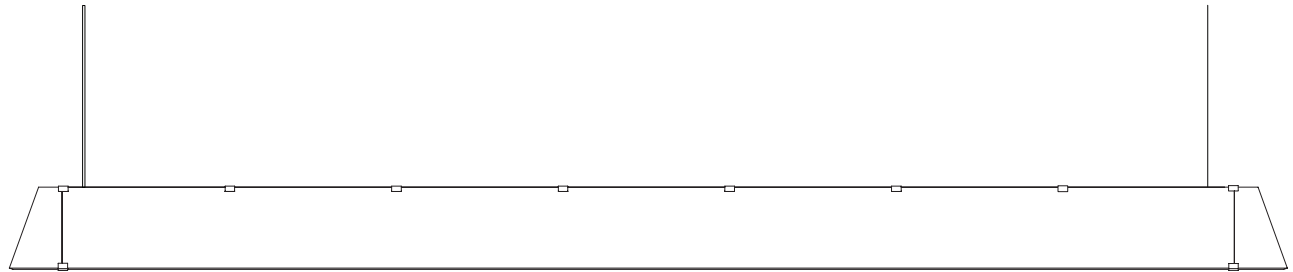


RAVENHILL STUDIO

2122 Cypress Ave, Los Angeles, CA 90065
323.977.8532, contact@ravenhillstudio.com



We recommend installation of our Beam Pendant 84" by a professional. Please share this guide with your electrician.

Read instructions completely before beginning assembly, and consider having a friend nearby in case you need an extra set of hands.

Your Beam Pendant 84" consists of **(21)** individual parts:


- | | |
|---------------------|----------------------------|
| (1) Beam Pendant | (2) Mounting Screws |
| (2) Drivers | (1) Aircraft Cable Support |
| (1) Canopy | (1) Drywall Screw |
| (3) Thumb Screws | (1) Drywall Anchor |
| (1) Fire Enclosure | (1) Knurled Nut |
| (2) Wire Nuts | (1) Cord Grip |
| (4) Terminal Blocks | |

Built into your Beam Pendant are eight low voltage LED boards and two canopy mounted drivers.

The boards are warm white (2700K) and have a 15,000 hr lifetime.

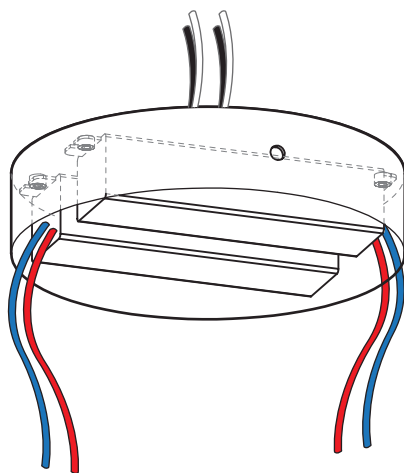
Contact the manufacturer for replacement LEDs or drivers.

LOW VOLTAGE FIXTURE. DO NOT PLUG INTO LINE VOLTAGE.

 **CAUTION:** Before starting, turn off power at main circuit power.

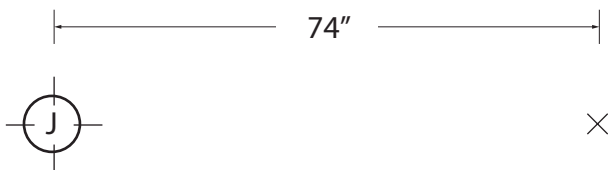
Installation Instructions

1. Our Drivers come pre-attached to the Fire Enclosure. If attachment seems loose, please tighten screws that secure the Drivers. The AC Input leads (2 black, 2 white) should exit through the top of the Fire Enclosure, and the DC Input Leads (2 red, 2 blue, 2 pink, 2 purple) should hang from the bottom of the fire enclosure.

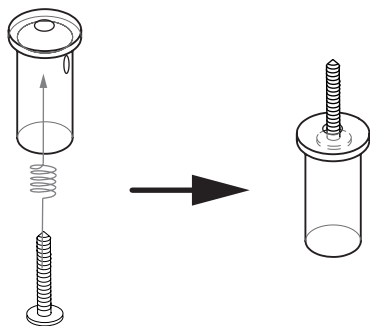


2. Determine axis of orientation of fixture. On this axis, draw a mark on ceiling 74" from the center of your junction box. This mark will act as the center for your Aircraft Cable Support.

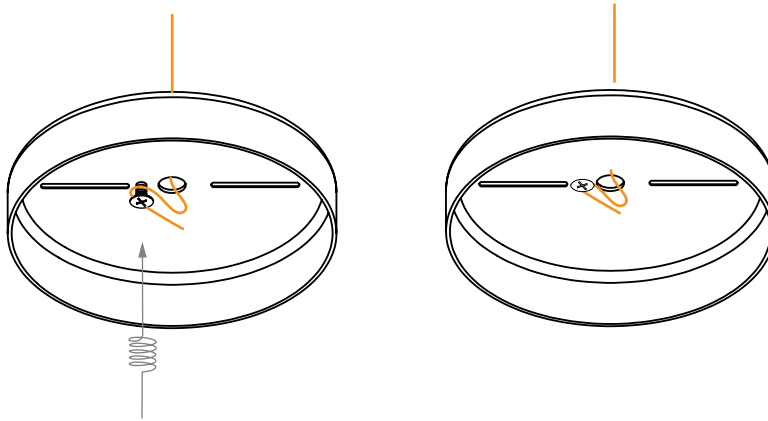
If installing Beam on a sloped ceiling please refer to alternative Beam Sloped Ceiling Install Instructions



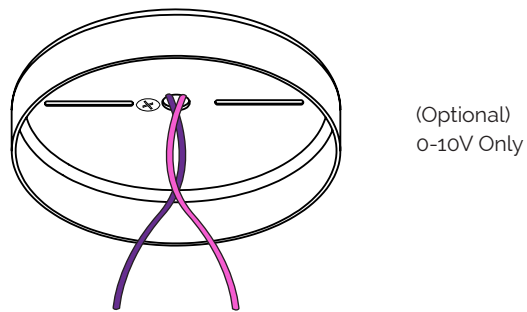
3. Unscrew top of Aircraft Cable Support apart from bottom, and put bottom aside. If using Drywall Anchor, install Anchor in ceiling on mark. Next, install top of Aircraft Cable Support by driving Drywall Screw through hole on top of Aircraft Cable Support into mark on ceiling so that Aircraft Cable Support sits tightly against ceiling.



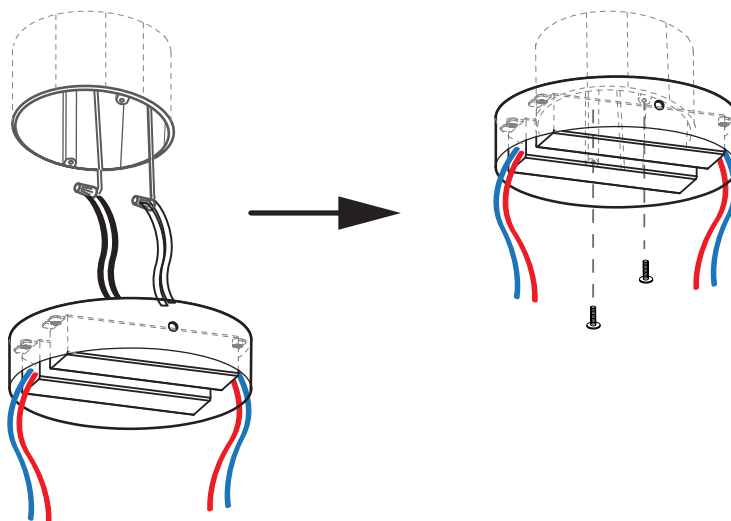
4. Attach Ground Wire from source to Ground Screw on Fire Enclosure by wrapping Ground Wire around Screw and tightening Screw firmly.



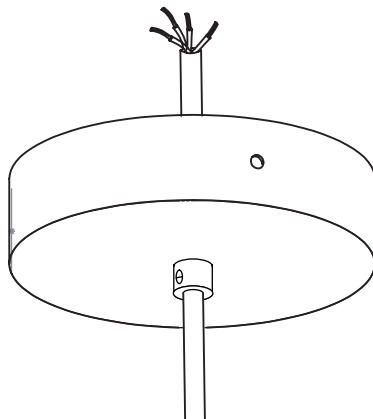
*** If using 0-10v dimming system, pull dimming leads from source through center hole in Fire Enclosure.



5. Connect the AC Input leads (2 black, 2 white) to power source with Wire Nuts. Next, install Fire Enclosure to junction box with Mounting Screws



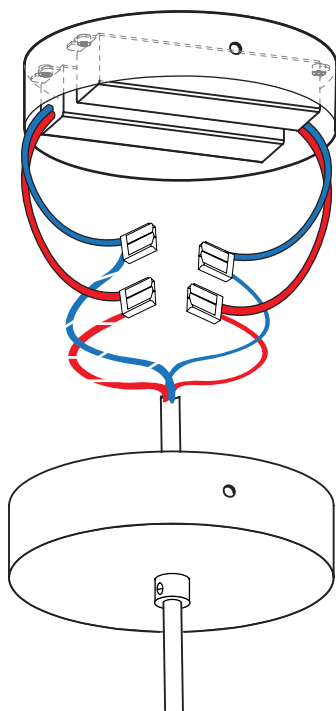
6. Pull cord from Beam Pendant through Strain Relief and Canopy. Determine the hanging length of your fixture by positioning assembled fixture in desired location. Once height has been determined tighten, the Strain Relief set screw. Cut excess cord and strip wire ends.



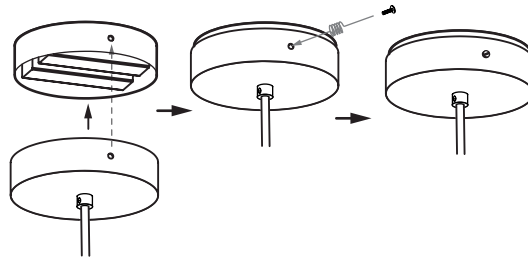
7. Isolate DC Output wires from each driver. Connect Wire from fixture to Drivers one at a time as follows.

For regular connections and ELV dimming, isolate blue and red wires from driver, and tuck purple and pink wires neatly into canopy. From the first Driver, connect the RED wire (+) from the Driver to the FULL RED wire (+) from fixture, then connect BLUE wire (-) from Driver to FULL BLUE wire (-) from fixture. From the second Driver, connect the RED wire (+) from the Driver to the STRIPED RED wire (+) from fixture, then connect BLUE wire (-) from Driver to STRIPED BLUE wire (-) from fixture.

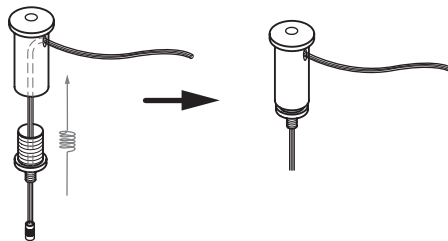
For 0-10v dimming, isolate purple and pink wires from Drivers. Connect both purple wires (+) from the Drivers to the 0-10 v positive lead (+) from source with Wire Nuts. Next, connect both pink wires (-) from Drivers to neutral wire (-) from the 0-10v neutral lead with Wire Nuts.



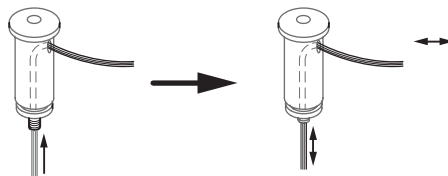
8. Slide Canopy over Fire Enclosure. Align holes on side of Canopy with holes on side of Fire Enclosure. Secure Canopy to Fire Enclosure by tightening Thumb Screws through Canopy into holes in Fire Enclosure tightly.



9. Separate Aircraft Cable Support by unscrewing the screw cap and the bottom the Cable Support body. Pull Aircraft Cable from fixture through screw cap and both bottom and top of the Aircraft Cable Support, then out through side hole. Thread Aircraft Cable Support bottom into the top, pushing down on threaded nipple slightly to allow wire to freely spin.



10. Adjust fixture height by increasing/decreasing drop of Aircraft Cable by pushing up on threaded nipple on bottom of Aircraft Cable Support and pulling/pushing Aircraft Cable through side hole until fixture hangs level.



11. When fixture is level, attach screw cap to threaded nipple on Aircraft Cable Support tightly. Trim excess Aircraft Cable. Turn the fixture on, and enjoy!

